

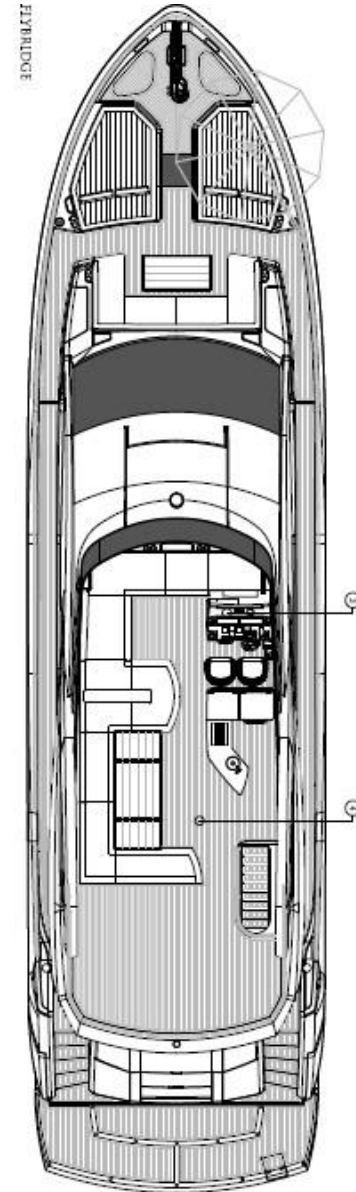
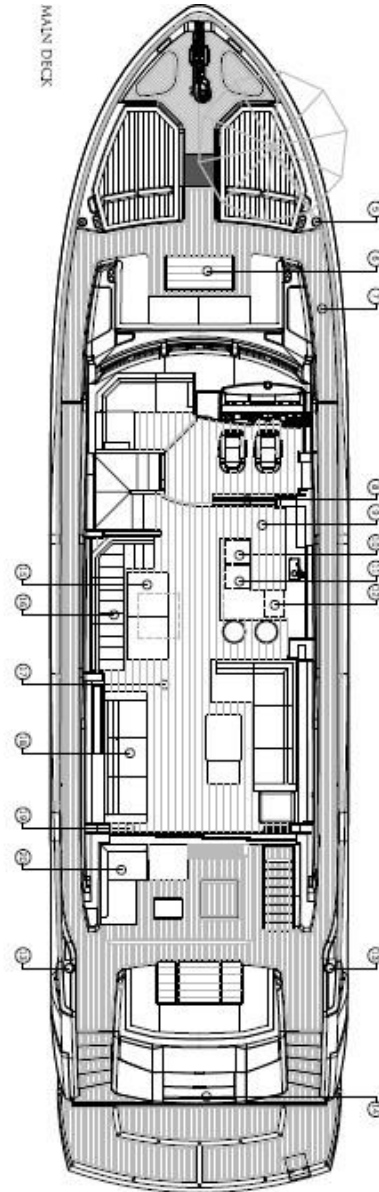
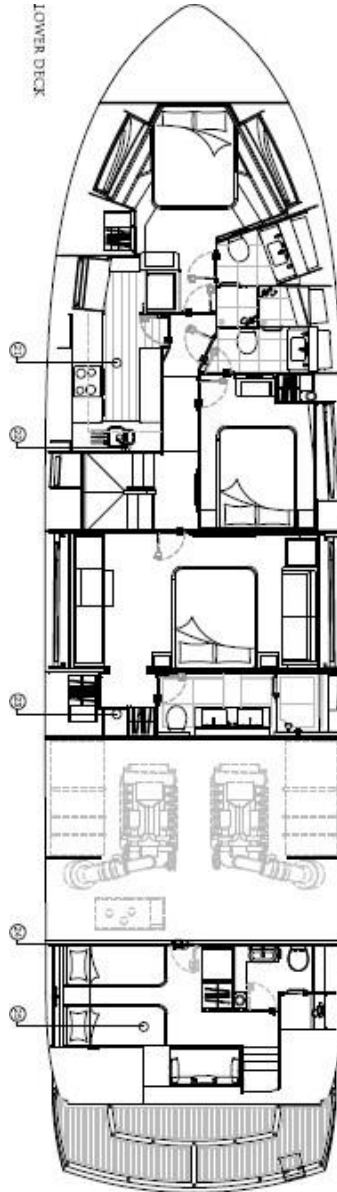
# **2025 Brand-new SUNSEEKER 76 Yacht**





Model: 2025 Sunseeker 76 Yacht  
Length: 23.60m  
Beam: 5.95m  
Draft: 1.70m  
Displacement: 53,700kg

Engine: Twin MAN V12 1550 (2 x 1550PS)  
Fuel Capacity: 6,000L  
Water Capacity: 1,400L  
Max Speed: 32 Knots

































# LOWER HELM





# LOWER HELM





# LOWER HELM



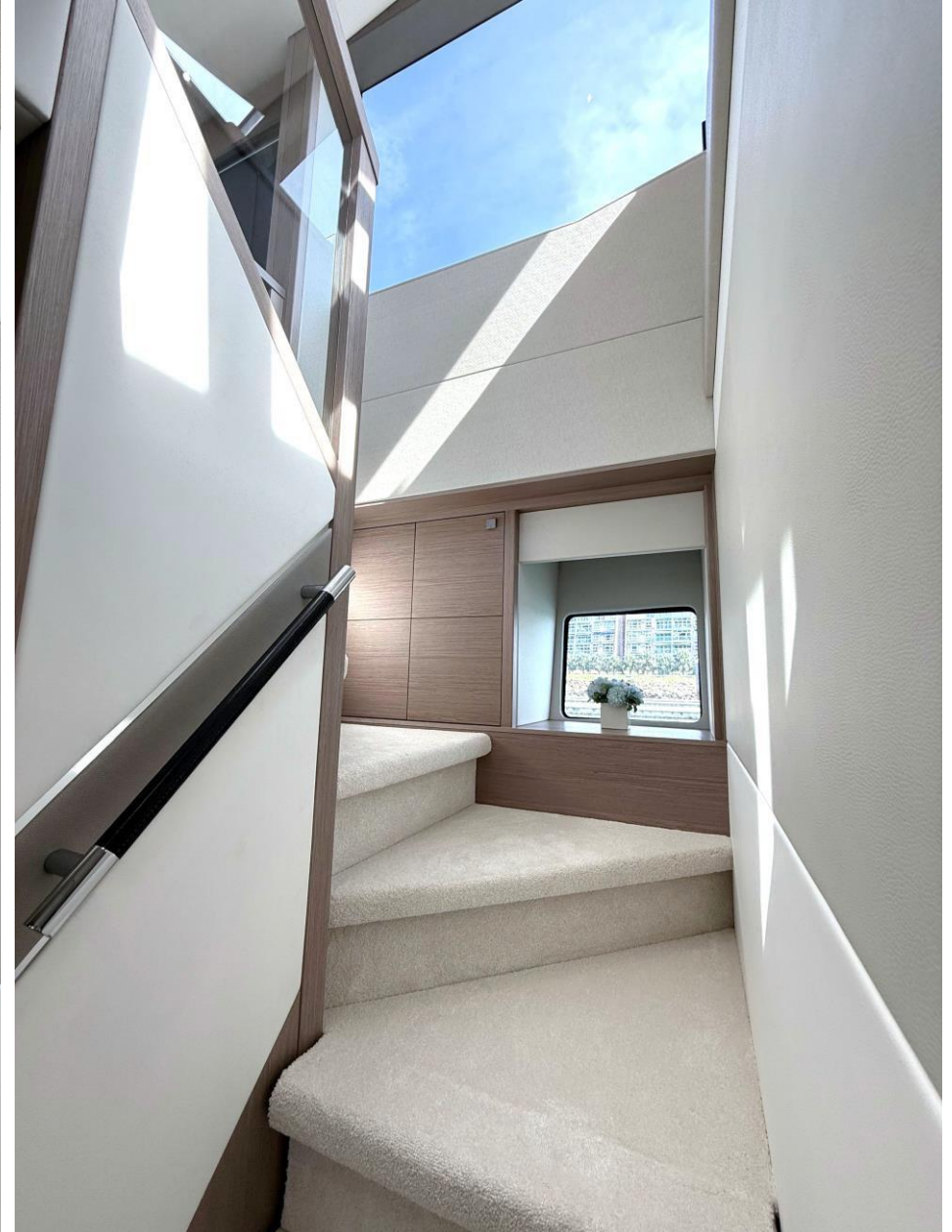


# LOWER HELM





# STAIRS TO LOWER DECK





# LOWER GALLEY









# MASTER STATEROOM





# MASTER STATEROOM





# MASTER STATEROOM





# MASTER STATEROOM





# MASTER STATEROOM



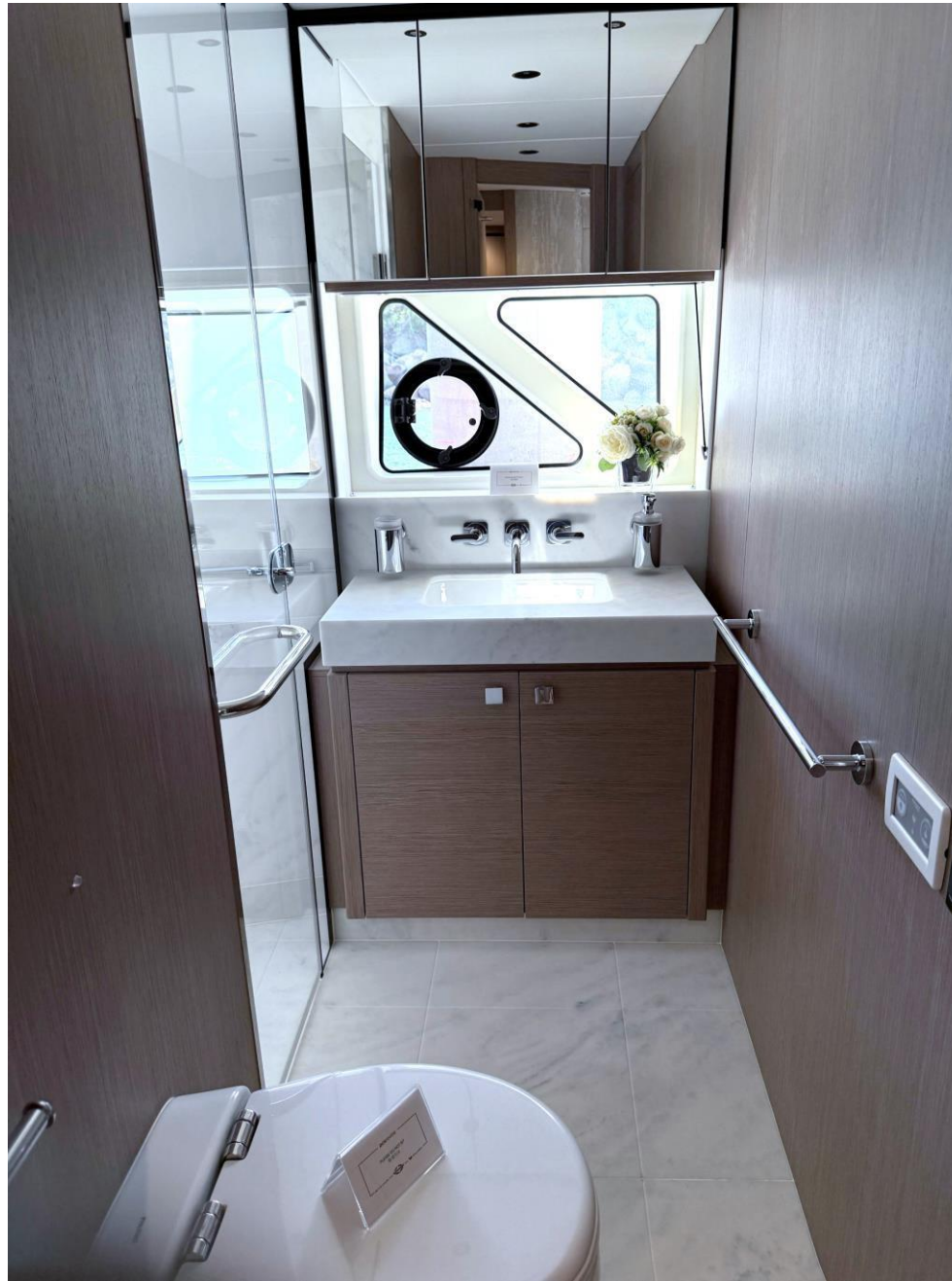


# FORWARD CABIN





# FORWARD CABIN





# STARBOARD CABIN





# STARBOARD CABIN









































# UPPER HELM

























- "Beach Club Package (Includes the following options): 1. Drop down work station. 2. Fold down platform seat. 3. Platform overhead shower fitted to gull wing door."
- Flybridge composite hardtop, including electric retractable centre canopy and aft electric awning
- Flybridge hard top, sides, undersides and rear canopy to be sprayed Jet Black. Radar Scanner to be sprayed LSA Jet Black and Radar chair equipment including VHF whip aerials to be sprayed Jet Black. (No Warranty Offered)
- Compass Swinging and adjustment with correction card
- Air Conditioning Tropical upgrade to chillers and air handlers 153,000BTU
- Camera monitoring and docking system - Platform view infrared dome camera and two engine view infrared room cameras. Linked with multi switch to Navigation displays.
- Dimmer switches on interior and exterior overhead lighting
- LED halo illumination to the SUNSEEKER boat name lettering on the flybridge overhang
- Low level LED side deck lights 10 per side
- Stern Docking Lights
- Underwater lights x 4
- Wine cooler for 20 bottles
- Sleipner Vector Fin stabilisers
- Engine room access door from Crew cabin (not possible with Voltage regulator or Shore power convertor options)
- Hydraulic Sleipner Bow thruster 23.3hp and Hydraulic Sleipner Stern Thruster 20hp with Simultaneous dual Proportional controls
- Preparation for future installation of a Water Maker. Seacock and outlets blanked off. Fresh water feed to tank. Power supply
- Corner seating group on the forward port side of the cockpit
- Fresh water deck wash system with outlets on Bathing Platform, Flybridge and Fore deck
- Pair of Retractable Cleats for tender on port and stbd corners of platform
- Water purifier for icemaker
- Flybridge Teak Decking
- Teak fore deck table with fixed top fitted on a polished stainless steel leg
- Teak forward Side Decks to include the anchor deck and Seating group deck
- Parasol with offset post at foredeck with two sockets and dedicated stowage
- Cadorin Hard Wood Flooring to Saloon, dining and helm
- Safe concealed in cabinetry (24.5 lts. W360mm x H190mm x D410mm) in the Master Cabin
- Interior Wood Finish - Silver Oak Low build open grain Satin Finish
- Lower deck galley option
- Dark Tinted film to side windows and sliding doors
- Instant boiling water, filtered chilled and sparkling water supply in the galley with a Quooker Flex Tap with the Pro3 Tank and the Cube unit.
- Marine Electric BBQ Grill on the Flybridge



- Lewmar 50Kg Delta Galvanised Anchor and 90 Metres of 12mm Galvanised anchor chain
- Sprung mattress for beds in the Master Cabin the Forward Cabin the Starboard Mid Cabin and in the Port Mid Cabin
- Second MASE Mariner 2700 S 50Hz 27kW with Glendinning Cablemaster power feed and recovery for the 230V 50 Hz 100 amp AC shorepower cable and Second 230V 50 Hz 63 amp AC shorepower socket with 20 meter cable
- Engine room storage cage located above the starboard engine (not available with spa tub option)
- ElectroSea Clearline System to protect the air conditioning lines and strainers from marine growth infestation
- Master cabin door to have key lock on outside and Snib lock on inside
- Paint Hardtop support moulding Black using LSA paint as detailed in 2432476 Hardtop support leg mouldings to be painted using LSA Black Paint PDF
- Upgrade the standard Flybridge helm 2 off 12 inch displays to Two Simrad NSS16 Evo3S colour 16" Multifunctional touch screen Chart Plotter displays.
- Upgrade the standard 4G Pepwave to a 5G Pepwave unit
- Add a silver oak bulkhead behind the helm seats with frosted electro glass in top section as detailed in Helm area electro glass screen PDF
- Change crew cabin layout to have 2 off single beds as detailed in 2432476 Crew Cabin beds PDF 3
- Add Snib locks to all cabin doors and an additional Snib lock to the Stbd cabin bathroom door for use from the cabin side (keep standard bathroom door snib lock as well)
- Add a single switched multi power socket in Lobby under stairs cupboard for charging a hover
- Change the Saloon port side sofa to a longer sofa by removing the aft cabinet and moving the Air conditioning fan coil unit to above the ceiling grounds, see PDF for more details on sofa. Also make back rest height on Saloon port sofa and Cockpit corner seating group the same height
- Heirlooms Bedlinen - Set of 570 thread count white Egyptian cotton Classic plain sheets for all guest cabins and cotton percale for crew. Comprising of quilted mattress protector, fitted bottom sheet, flat top sheet, and housewife and oxford style pillowcases for all berths. Crew cabin has 2 single beds and no Port twin cabin as this is now Galley
- Replace the standard dining area storage cabinet with a fixed L shaped bench seat upholstered in a standard Sunseeker Fabric and a table that can convert from a coffee to dining table with 2 electric pedestals, Table top to slide sideways to allow extra leg room when being used as a Coffee table as used on the 75 yacht as detailed in 2432476 Dining area changes PDF. Table top to be Black Gloss lacquer and not Silver oak wood finish.
- "Covers Package—☐ Aft cockpit seating and Aft cockpit table cover. ☐ Foredeck seating, Foredeck sunpad and table covers. ☐ Flybridge seating, sunpad, table and helm seat covers."
- Optional aft cockpit seating group covers. Corner seat, separate seat base and ottoman.
- All exterior covers (as listed in the two options above) to be supplied in the upgraded Sunbrella Black in lieu of the standard valmex fabric.
- In area behind helm on Stbd side Replace the standard dining table and chairs with a special bar unit as detailed 2432476 Main deck Saloon bar unit PDF issue 2
- Supply loose a full set of Anodes for the yacht including Thrusters, Platform, Tabs and Stabilisers
- Add 2 off exterior double power sockets (Multi Plug Type) as seen in 2432476 Additional Exterior Double Power Sockets PDF. One in Cockpit and one in Flybridge Dining area seating



