

SUNSEEKER MANHATTAN 73

LOCATION

HONG KONG

YEAR

2013

MADE IN

ENGLAND

BUILDER

SUNSEEKER

USD \$995,950

SUNSEEKER MANHATTAN 73



ENGINE:

2x MTU 10V 2000
M84 2760hp

LENGTH:

22.6m | 74ft

CABINS:

3 + 2 Crew

PORT ENGINE:

1700 Hours

TOP SPEED:

34 Knots

SLEEPS:

6 + 2 Crew

STARBOARD ENGINE:

1700 Hours

CRUISING:

25 Knots

BATHROOMS:

3 + 1 Crew

SUNSEEKER MANHATTAN 73

Sourced, customised and ordered by her first and only-owner family, they chose all their own specifications onboard. This galley down version means the whole middle deck is given to large salon for purely socialising and relaxing. The yacht was built with family cruising and weekend entertaining in mind, and this is exactly what the yacht has been used for.

Her build quality is reflected in how well the yacht presents – 3 levels and a wide beam that allows for a flybridge extending across and fully aft, with a retractable sun roof for those sunny days at sea. Large sunbeds lie forward and adjacent to the twin helm station.



GALLERY



































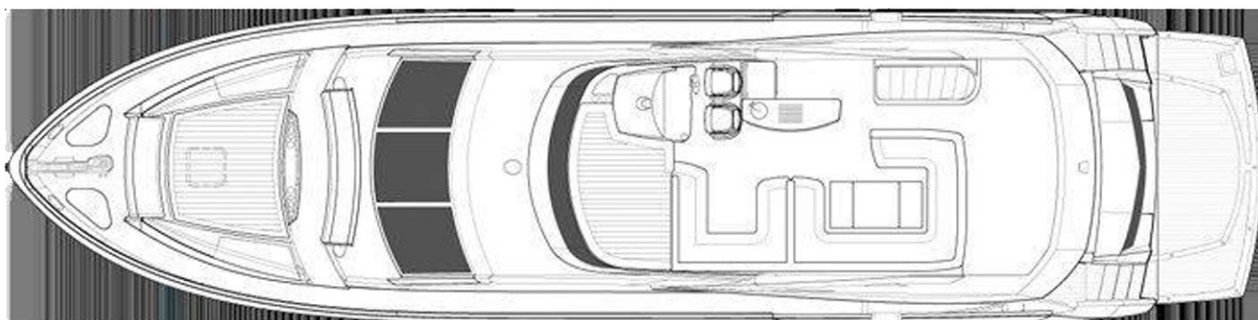




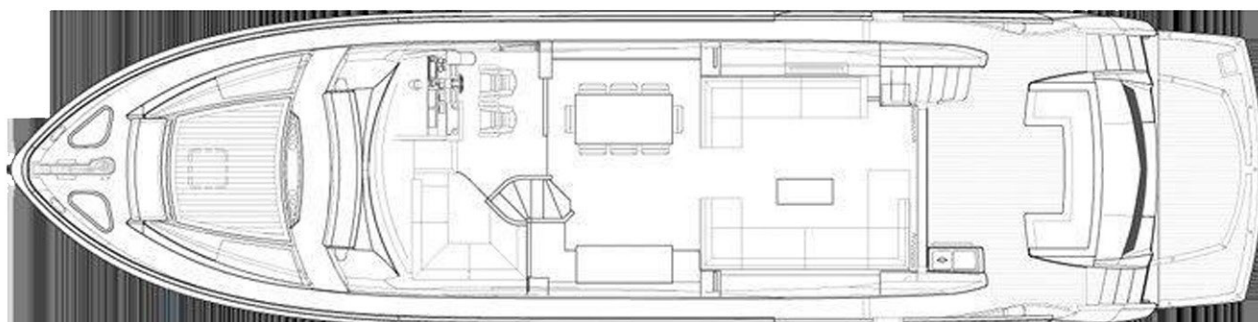


GENERAL ARRANGEMENT

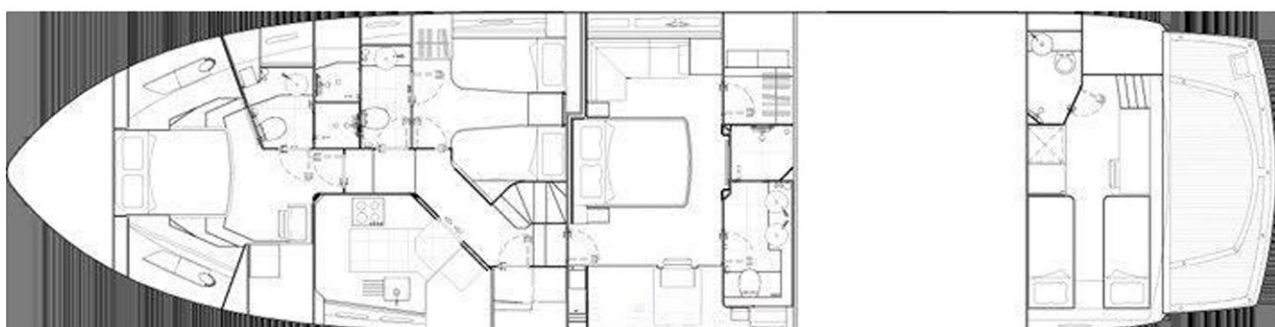
Upper Deck



Main Deck



Lower Deck



USD \$995,950

SUNSEEKER MANHATTAN 73



ENGINE:

2x MTU 10V 2000
M84 2760hp

LENGTH:

22.6m | 74ft

CABINS:

3 + 2 Crew

PORT ENGINE:

1700 Hours

TOP SPEED:

34 Knots

SLEEPS:

6 + 2 Crew

STARBOARD ENGINE:

1700 Hours

CRUISING:

25 Knots

BATHROOMS:

3 + 1 Crew

