

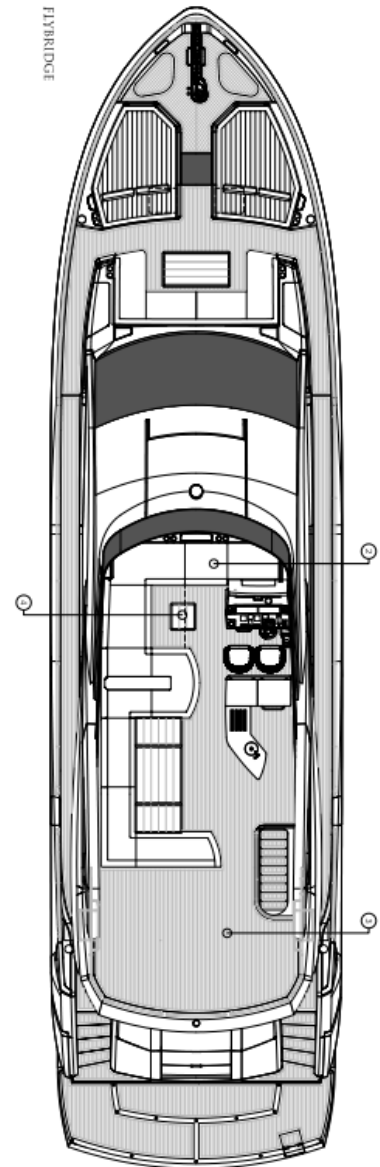
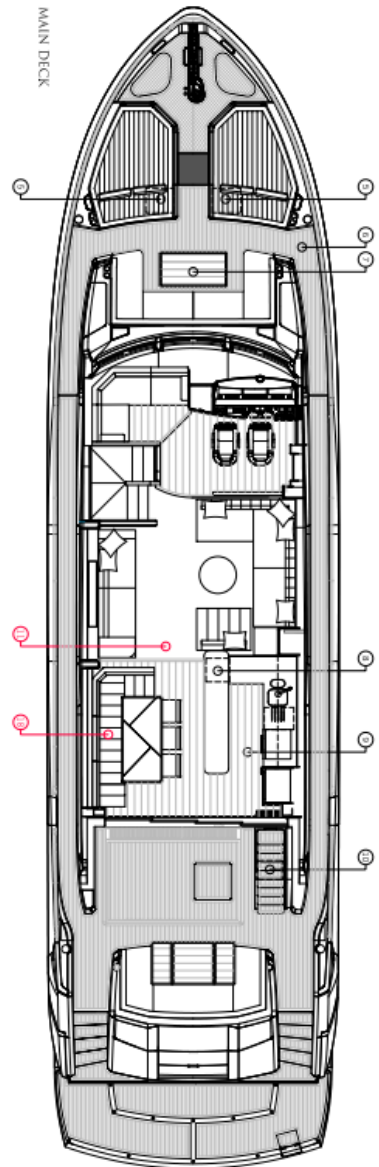
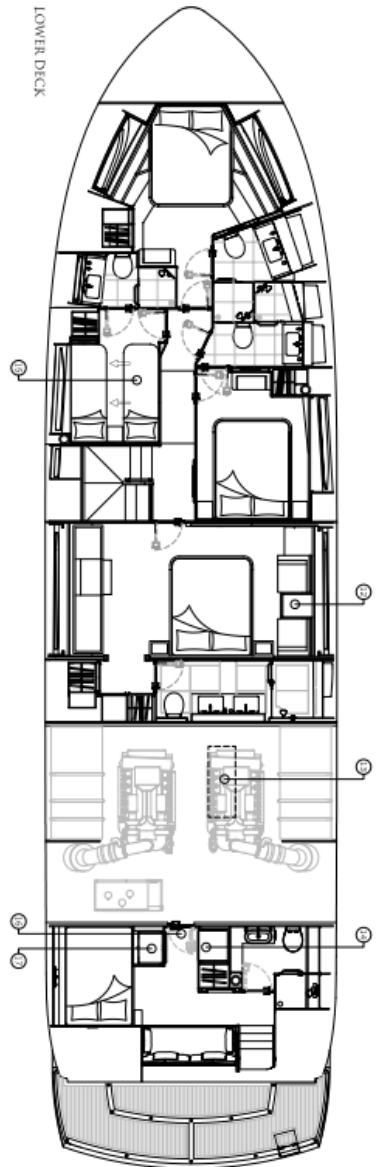
**2024**  
**SUNSEEKER 76 Yacht**





Model: 2024 Sunseeker 76 Yacht  
Length: 23.60m  
Beam: 5.95m  
Draft: 1.70m  
Displacement: 53,700kg

Engine: Twin MAN V12 1550 (2 x 1550PS)  
Fuel Capacity: 6,000L  
Water Capacity: 1,400L  
Max Speed: 32 Knots  
Engine Hour: 245 / 243 (January 2026)  
Generator Hour: 236 / 230 (January 2026)























# LOWER HELM



# LOWER HELM







# MASTER STATEROOM



# MASTER STATEROOM



# MASTER STATEROOM



# MASTER STATEROOM





# FORWARD VIP CABIN



# FORWARD VIP CABIN



# FORWARD VIP CABIN



# FORWARD VIP CABIN

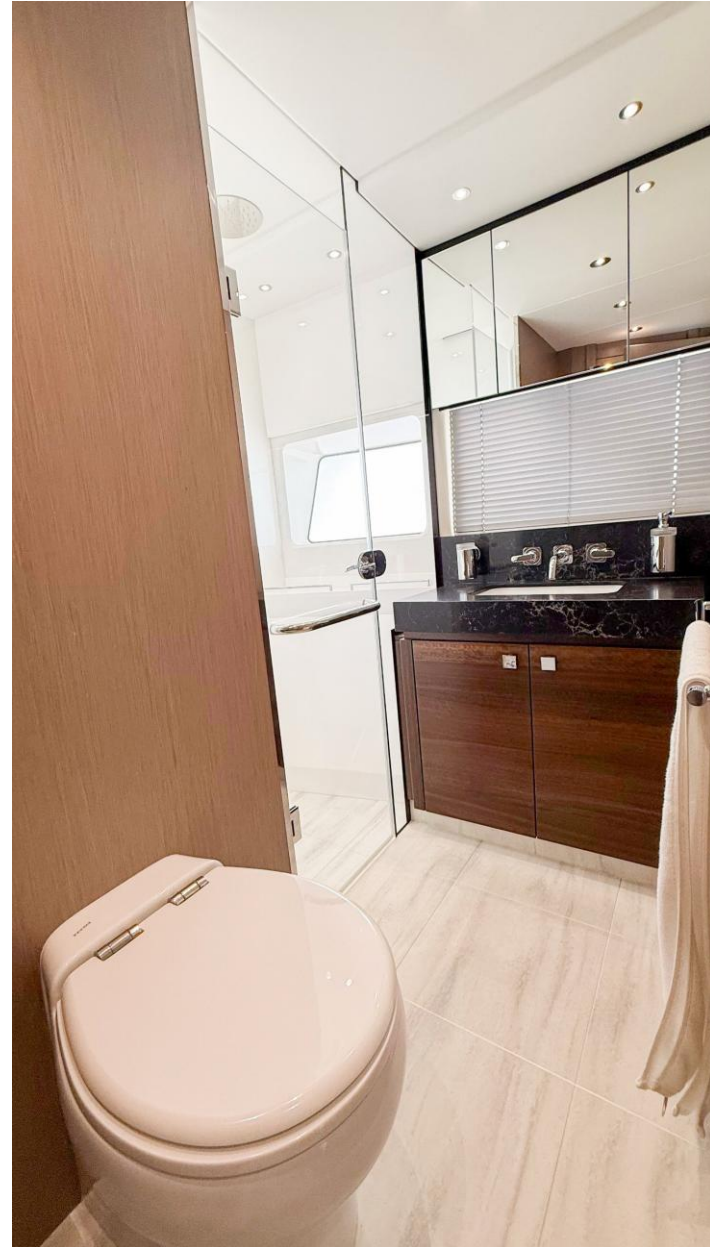


# DOUBLE CABIN



# DOUBLE CABIN





# TWIN CABIN



# TWIN CABIN















# UPPER HELM











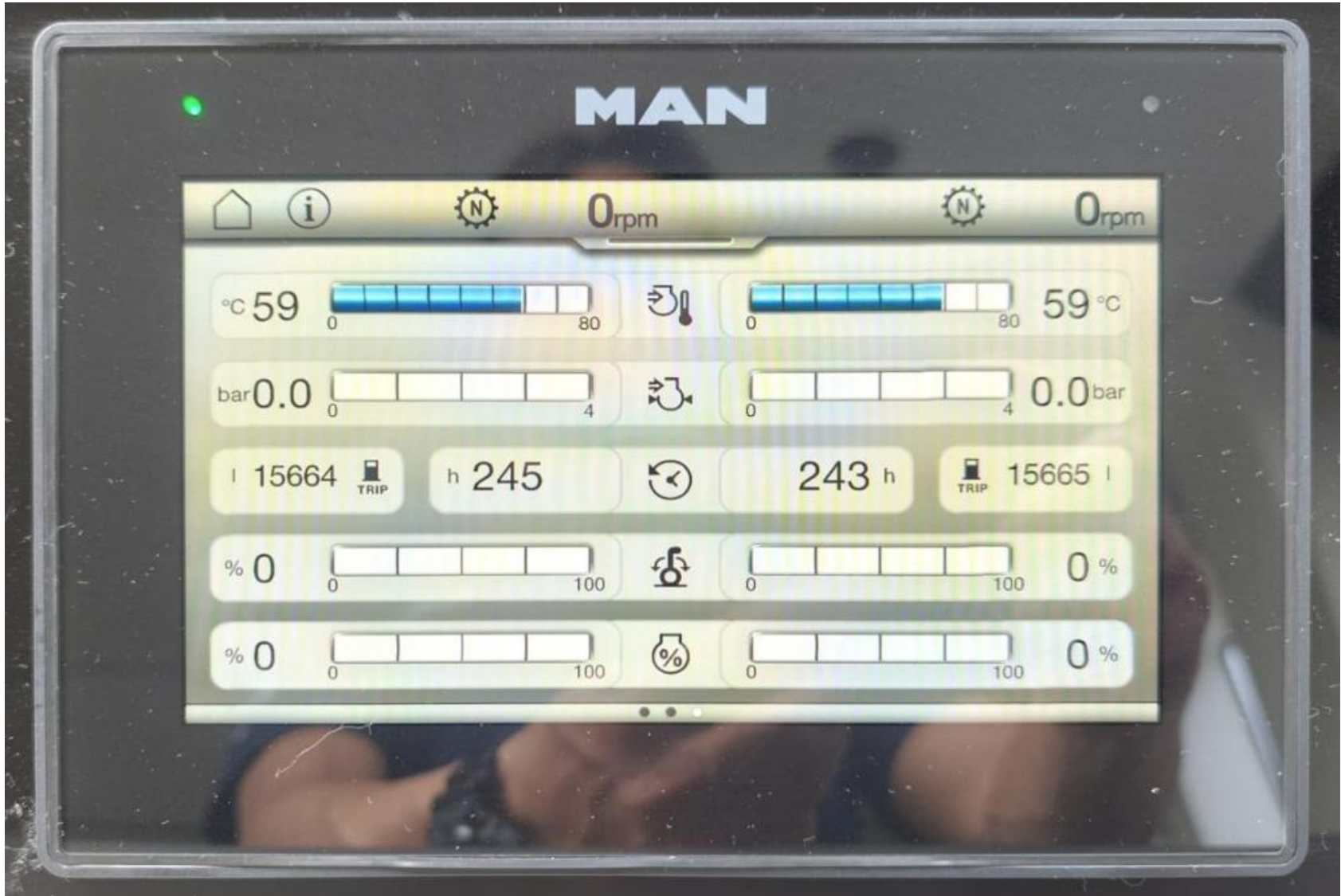




# ENGINE ROOM







- Platinum Package (Includes the following options):
- Flybridge composite hardtop, including electric retractable centre canopy and aft electric awning.
- Sleipner stabiliser vector fin system.
- Hydraulic Telescopic gangway in Stainless steel with teak treads.
- Dimmer switches on interior and exterior overhead lighting.
- Low level LED side deck lights 10 per side.
- Second 27kW Generator with Glendinning Cablemaster.
- Flybridge Teak Decking.
- Pair of Retractable Cleats for tender on platform.
- Additional pair of aft Spring Mooring cleats.
- Hydraulic Sleipner Bow thruster 23.3hp and Hydraulic Sleipner Stern Thruster 20hp with Simultaneous dual Proportional controls.
- Two Drawer refrigerators under the bow Sunbeds.
- Wine cooler in the galley.
- Fresh water deck wash system.
- Large Grey water storage tank option.
- Safe 4 brick with Digital lock for the Master stateroom.
- Safe 2 brick with Digital lock for the Forward VIP cabin.

Simrad Navigation Consoles Packages (Including the following options):

Main Console Navigation:

- Simrad IS42 Speed/Depth Instruments with Simrad xSonic ss60 stainless steel broadband Dual frequency 50kHz-200kHz shallow and bottom tracking depth and temperature transducer.
- Simrad AP44 Autopilot system.
- Two 19" Simrad MO19T displays. Simrad NSO processor and Simrad OP50 Controller and SD card reader.
- Simrad Halo 2004 Pulse Compression Radar 64nm 4 foot open array radar scanner.
- Simrad RS100 VHF Radio with DSC function with 2.4 metre whip antenna.
- Simrad Automatic Identification System NAI5500 Class B AIS Transponder system with dedicated VHF and GPS receiver.
- Built in wireless connectivity links the MFD to mobile devices for remote viewing and control.

Flybridge Console Navigation:

- Simrad IS42 Speed/Depth Instrument.
- Simrad AP44 Autopilot system.
- Two Simrad NSS16 Evo3S colour 16" Multifunctional touch screen Chart Plotter displays.
- Simrad HS100 VHF Radio with DSC function.

- Rexroth Aventics - Marex OS 3D Joy stick docking system - dual station
- Aft docking station. Rexroth Aventics - Marex OS 3D Joy stick.
- Air Conditioning Tropical upgrade to chillers and air handlers 165,000BTU
- Separate Miele washing machine and Miele tumble dryer in the Crew Cabin
- Stainless steel dual voltage Vitrifrigo. Refrigerator above with lower freezer/refrigerator compartment below.
- Vitrifrigo stainless steel Ice Maker - Classic Hydro in the Cockpit
- Underwater lights x 8. Four on stern and two either side.
- Preparation for future installation of a Water Maker. Seacock and outlets blanked off. Fresh water feed to tank. Power supply
- Second Hot water calorifier for boats with Spa tub.
- Fuel polishing system
- Teak forward Side Decks to include the anchor deck and Seating group deck
- Covers Package:
  - • Aft cockpit seating and Aft cockpit table cover.
  - • Foredeck seating, Foredeck sunpad and table covers.
  - • Flybridge seating, sunpad, table and helm seat covers.
- If hard top option is chosen the retractable centre canopy
- If hard top option is chosen the aft electric awning
- Engine room access door from Crew cabin (not possible with Voltage regulator or Shore power convertor options)
- Main deck aft galley option
- Two single beds with electrically operated slider to form an occasional double in the Port Mid Cabin
- Sprung mattress for beds in the Master Cabin the Forward Cabin the
- Starboard Mid Cabin and in the Port Mid Cabin
- Water purifier for icemaker
- Lewmar 50Kg Delta Galvanised Anchor and 90 Metres of 12mm Galvanised anchor chain
- Folding back rest for the flybridge forward seating group
- Forward flybridge seating group sunbed conversion with a fold out in-fill board and cushion. The in-fill board is supported on a teak coffee table which is on a telescopic leg.
- Flybridge Wetbar doors to be GRP in lieu of Teak
- Standard starboard cockpit wetbar doors to be GRP in lieu of Teak
- Teak fore deck table with fixed top fitted on a polished stainless steel leg
- Flybridge hard top, sides, undersides and rear canopy to be sprayed Jet Black. Radar Scanner to be sprayed LSA Jet Black and Radar chair
- equipment including VHF whip aerials to be sprayed Jet Black. (No Warranty Offered)

- equipment including VHF whip aerials to be sprayed Jet Black. (No Warranty Offered)
- Spradling Hitch premium exterior upholstery upgrade
- Interior Wood Finish - Bi-Colour Scheme - Silver Oak Low build open grain Satin Finish with Smoked eucalyptus figured high sheen satin finish features
- Marine Electric BBQ Grill on the Flybridge
- Performance AV Package (Includes the following options):
  - 1. Saloon Aft Galley Option with TV on fall and rise. Samsung 55" UHD Smart 4K Television with Apple TV app and Airplay 2 included. 4K UHD Blu-ray player. Surround system with a Proficient Soundbar powered by
    - a Sonos Amp and Sonos Subwoofer. B&W rear speakers with Sonos Amp.
  - 2. Master stateroom Samsung 55" UHD Smart 4K Television with Apple TV app and Airplay 2 included. 4K UHD Blu-ray player with a Proficient Soundbar powered by a Sonos Amp and Sonos Subwoofer.
  - 3. Forward cabin Samsung 43" UHD Smart 4K Television with Apple TV app and Airplay 2 included. 4K UHD Blu-ray player and a Proficient Soundbar powered by a Sonos Amp.
  - 4. Starboard Guest cabin Samsung 32" HD Smart Television with built in Apple TV App and Airplay. Sonos Amp with Fusion ceiling speakers.
  - 5. Port Guest cabin 24" HD Television with a Sonos Amp with Fusion ceiling speakers. Apple TV.
  - 6. Crew cabin 24" HD Television with Fusion Apollo Radio with Bluetooth and Airplay functionality and Fusion ceiling stereo speakers. Sonos linked to the cabin AV system.
  - 7. Aft Cockpit zone with Four Sonance Extreme Speakers with Sonos Amp.
  - 8. Fly-bridge zone with Four Sonance Extreme Speakers with Sonos Amp.
  - 9. Fore deck zone with Two Sonance Extreme Speakers with Sonos Amp.
  -
- The exterior zoning audio is controlled via the Sonos App on a supplied Apple tablet.
- Note. The router is to provide access to the internet via Wi-fi or Cellular data and to allow the user to link to an available marina Wi-fi network. The boat can be fitted with up to 2 SIM cards (user supplied) to access the internet when in range of 3G-4G data signals. This system will give data communications only. Voice communication is not covered. Air time, service agreements and SIM cards shall be the responsibility of the Client.
- Master cabin wardrobe doors to be Umbra Grey lacquer Satin finish
- Master cabin - feature panels either side of the sound bar to be a Umbra Grey lacquer Satin finish as seen on PDF
- Master cabin Port side vanity desk frame and draw fronts to be finished in
  - Umbra Grey lacquer Satin finish as detailed in PDF
- Forward cabin wardrobe door and frame to be Umbra Grey Lacquer Satin finish
- Port cabin wardrobe door and frame to be Umbra Grey Lacquer Satin finish
- Stbd cabin wardrobe door and frame to be Umbra Grey Lacquer Satin finish

- Galley Top box doors, lower cabinet doors, Fridge Freezer doors and forward side panel, Bar unit inboard and aft faces and galley forward bulkhead to be finished in Umbra Grey lacquer Satin Finish as seen in PDF
- Window mullions forward, aft and inboard faces to be finished in either
- Eucalyptus or oak as detailed in PDF and not in the standard mirror finish
- Headboard to be upholstered using Zimmer and Rohde GY 10820 993 fabric
- Upgrade some of the standard stone to Quartz Vanilla Noir 5100 polished
- Upgrade the yachts standards venetian blinds to Roman blinds
- Upgraded fabrics from Platinum collection
- Upgrade standard carpet to B - Wall Street - Margarita 882838
- Upgrade Saloon standard carpet to B - Wall Street - Margarita 882838
- Heirlooms Bedlinen - Set of 570 thread count white Egyptian cotton Classic plain sheets for all guest cabins and cotton percale for crew. Comprising of quilted mattress protector, fitted bottom sheet, flat top sheet, housewife and oxford style pillowcases for all berths
- Change all reading lights to Chelsom LED Knurl LED/7/BB in black
- Saloon table lamp to be Porta Romana Nina Biscuit CLB48 with 16" Tall Cylinder in Natural Linen with Cream Card lining
- Dining chairs to be EGADI DINING ARMCHAIR 01 13 IN VERY WOOD
- MATERIALS - ASH STAINED WENGE & B-CALI600 (dark grey)
- Wood flooring in Helm, Dining and Galley to be - Dark Wenge tone European Oak varnished - 140mm wide ROESP588E (974427). Saloon floor is carpet
- Master Cabin to have 2 off wall lights above headboard - Lights to be J Adams and Co Vector Wall Lights - finish to be Satin Nickle
- Master cabin Port side table lamp to be Chelsom Collins CZ/30/TL
- Upgrade the fabric for the vanity stool to Ice Piccolo 883885
- Change all cabin door handles and snib locks to BUSTER & PUNCH UK-LH-S-38ST-A and UK-TT-38-ST-A
- Change Wardrobe door handles to BUSTER & PUNCH UK-CB-760-ST-A CLOSET BAR - 760mm
- All interior scatter cushions to be feather filled.
- Forward VIP Headboard to be split matching other cabins. Refer to drawing for further information. Upper Headboard to be upholstered in Wemyss Renovare 10 Feather, lower headboard panels to be upholstered in Zimmer and Rohde Gypsy 10820 993.
- 7 X Additional Scatter Cushions
- Credit for the non supply of bedcovers.
- Master Cabin vanity desk stool to be a Very Wood Egadi dining armchair 21 IN VERY WOOD MATERIALS ASH STAINED WENGE and B CALI600
- In Master Cabin bathroom remove the wood edging from the Up and over feature to allow fabric panels to butt up against each other

